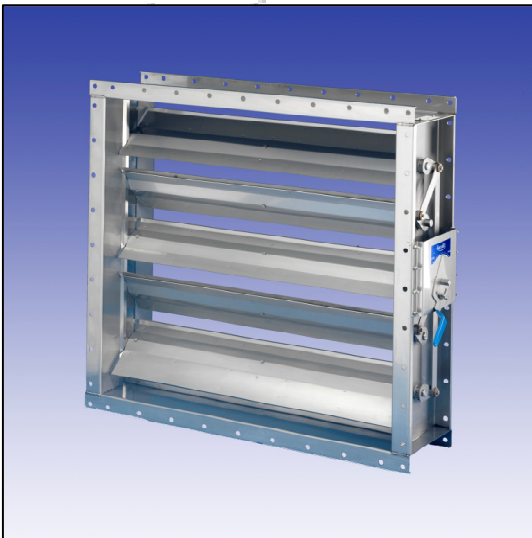


HEAVY DUTY VOLUME CONTROL DAMPER KHDR-CD

The KHDR –CD has been designed to serve as a volume control damper in situations where high velocities and pressures are present



Design:

The KHDR –CD damper has been designed to allow for various types of operating conditions.

Temperature: -20 to +300 degrees C

Pressure: +/- 8000pa

Velocity: up to 40 m/s

Construction

Casing:

- 250 x 50 x 2mm thick mild steel, galvanised or stainless steel material. Folded and fully welded construction. Non standard flanges and 3mm thick casings available

Blades:

- 150mm pitch double skin aerofoil type 1.5 or 2.0mm thick material, opposed blades overlapping action in mild steel, galvanised or stainless steel

Shafts:

- 20mm diameter 316 stainless steel tolerance bar

Linkages:

- Side linkage, out of airstream, 3mm thick stainless steel quadrant arms and link bars. Pivot pins are mounted in Oilite bushes

Bearings:

- Oilite bushes (-9 to + 70 deg. C) standard. High temperature Oilite bushes to 220 deg. C. Graphite bronze to 300 deg. C. reinforced PTFE (chemical resistance)

Quality – Investment – Innovation

HEAVY DUTY VOLUME CONTROL DAMPER KHDR-CD

Operation

Manual:

- Lockable manual quadrant with blade position indicator

Electric:

- Electric actuators – open/closed, spring return, modulating, 24v, 110v, 240v and 3 phase operation. Limit switches. Explosion proof ATEX rated options available

Pneumatic:

- Open/close, spring return, modulating, limit switches. Explosion proof ATEX rated options available

Chain operation:

- Drop chain operation, 90 deg reduction gearbox option available. Stainless steel chain guides and lockable chain retaining bracket.

Seals

Blades:

- Metal to metal opposed blade overlapping operation. Blade ends – stainless steel sprung side seals to inner casing

Shafts:

- Oilite bush or reinforced PTFE bush as standard.
- *Options available – Lip seals, “O” ring seals, packing glands, flange mounted remote bearings. Enclosed and sealed linkages.

Size Range:

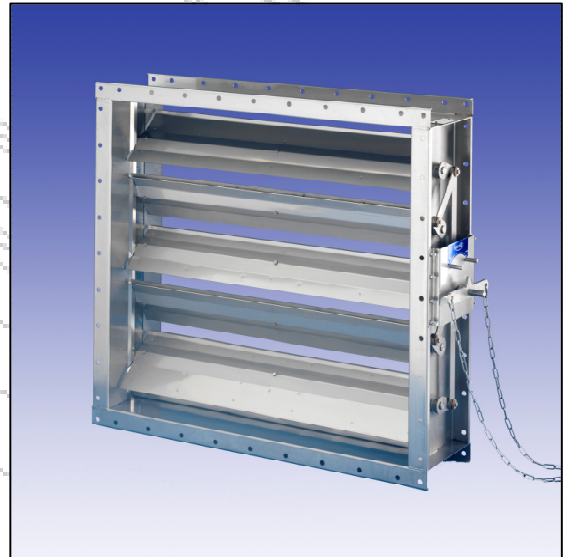
- From 200sq to 1250sq in one module. *Above these sizes in multiple modules with joint flanges

HEAVY DUTY VOLUME CONTROL DAMPER KHDR-CD

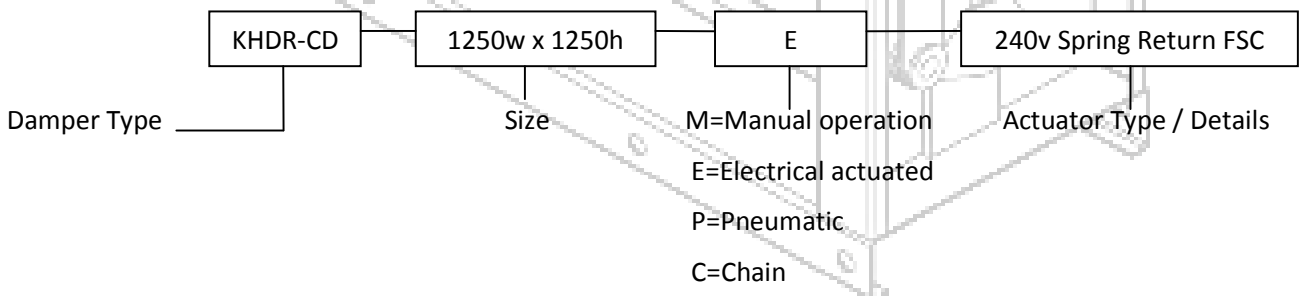
Alternative Options:

- Non standard casing depths and flange widths to suit customer requirements
- Circular drilled flanges in RSA and to BS & DIN standard patterns
- Polyester or Epoxy powder coat finish
- Food quality options available, including gaskets

The KHDR-CD "volume control damper" with tee bar and drop chain operation



ORDERING



Quality – Investment – Innovation

HEAVY DUTY VOLUME CONTROL DAMPER KHDR-CD

