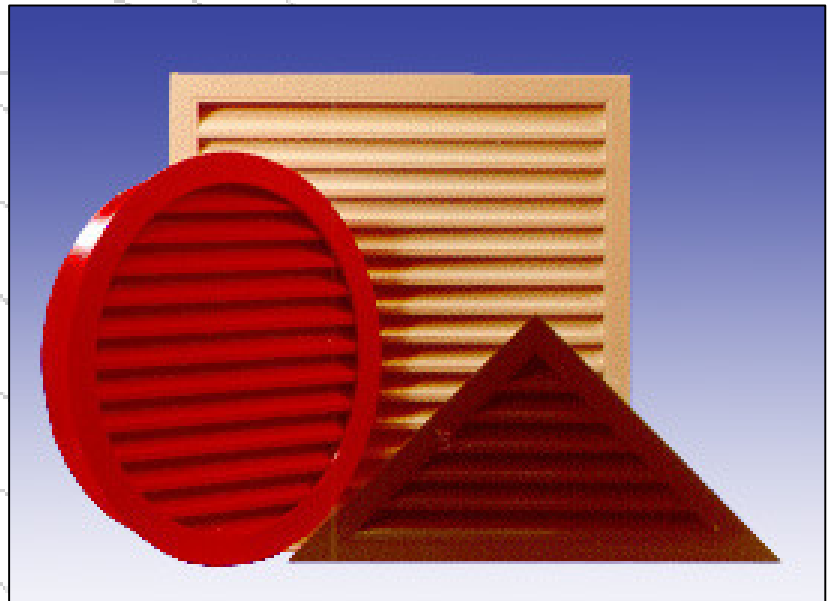


EXTERNAL WEATHER LOUVRES

KWL RANGE

Description:

- External Weather Louvres
- Range of shapes and sizes
- Range of colours



Applications:

- Louvres primarily used in ventilation and air conditioning systems to prevent water ingress at air intakes and discharges
- Natural ventilation openings such as plantrooms, boiler rooms, lift shafts, smoke exhausts, etc
- Architectural features
- Screening
- Louvre doors
- Penthouse louvres

Quality – Investment – Innovation

EXTERNAL WEATHER LOUVRES

KWL RANGE

Features:

- Comprehensive range of louvre sections, 38mm, 50mm, 75mm, 100mm
- Robust extruded aluminium sections
- Flanged or recessed louvres available
- Continuous louvre appearance
- Dummy, blanked and active louvre incorporated into one louvre section
- Integral bird mesh fitted as standard
- All shapes and sizes available
- Suitable for direct coupling with Konvekta dampers into one assembly
- Full range of alternative materials available – Galvanised steel, Stainless steel and PVC

Construction:

- Materials – Blades and casing are constructed from aluminium extrusion to BS1474 with a thickness of 1.6mm
- Appearance – The blades are inclined at 45° and mounted at the following centres and frame sizes

Blade Type	38	50	50 - 100	75	100
Blade Centres	38	50	50	75	90
Frame Depth	40	50	100	100	*100

*When mullion jointing is required, the frame depth = 140mm

- Frames – The frames can either be flanged or recessed
- Fixings – Supplied with flanges undrilled for fixing through the neck of the louvre. Alternative fixings available
- Options – Rot proof insect screen – Head/sill section – Blanking plates – Louvred doors – Penthouse louvers – Combined louvre damper assemblies
- Finishes – Mill finish as standard – Polyester powder coating to any RAL or BS4800 colour range

EXTERNAL WEATHER LOUVRES

KWL RANGE

Performance Data

(m/s)	PRESSURE LOSS - Pa			
Velocity (m/s)	KWL38	KWL 50 KWL 50/100	KWL 75	KWL 100
1.0	8	15	8	9
1.5	16	26	16	20
2.0	29	40	29	36
2.5	45	58	45	55
3.0	65	85	65	80
3.5	88	103	88	108
4.0	114	114	114	141
4.5	145	145	145	179
5.0	179	179	179	220

Figures based on a 1000 x 1000 louvre

- Louvre Area (Nett) = $\frac{\text{Air Volume (m}^3\text{/s)}}{\text{Air Velocity (m/s)}}$
(m²)
- Louvre Area (Nett) = Nominal opening width x
(m²) (Nominal opening height – 60)
- Recommended air velocity is 2.5m/s

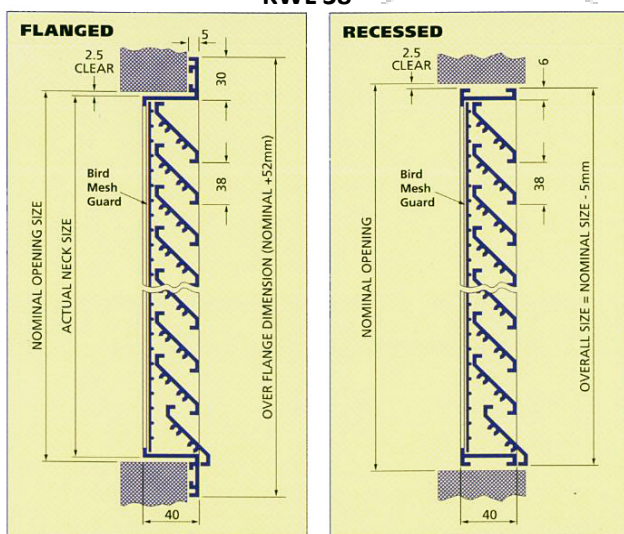
Quality – Investment – Innovation

EXTERNAL WEATHER LOUVRES

KWL RANGE

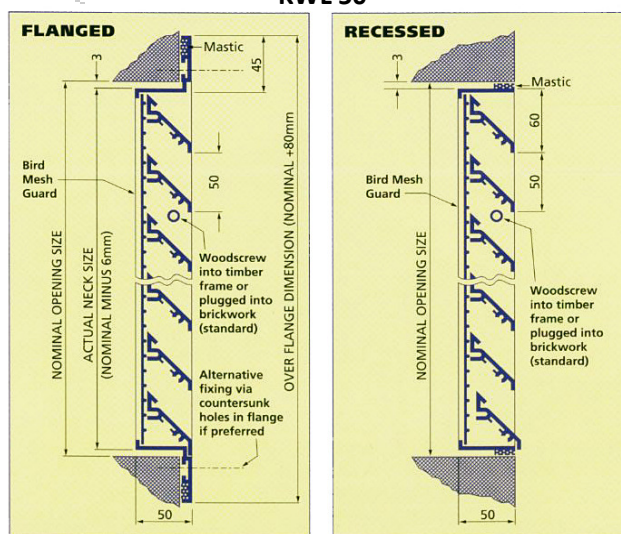
CONSTRUCTION DATA

KWL 38



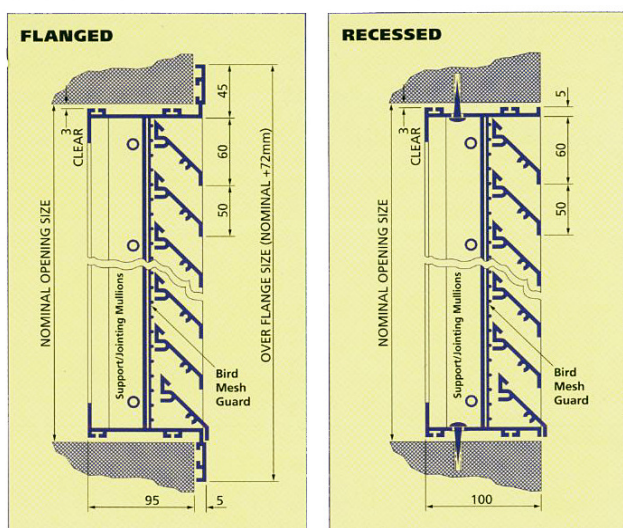
- Min. – 150 x 150mm
- Max. – 700 x 700mm

KWL 50



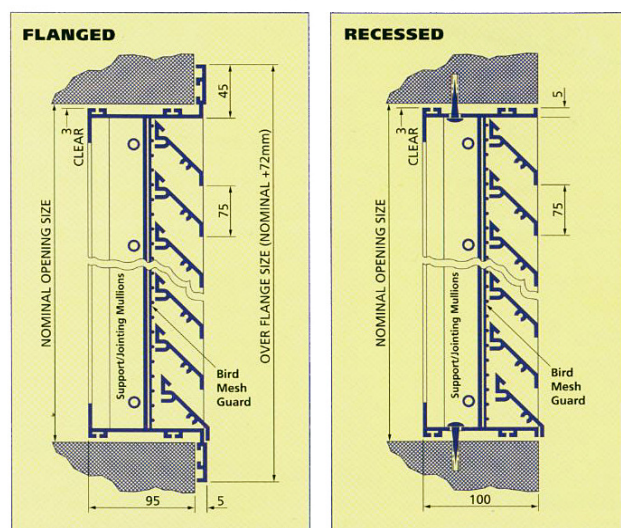
- Min. – 200 x 200mm
- Max. – 1200 x 1200mm

KWL 50 - 100



- Min. – 200 x 200mm
- Max. – 2000 x 2000mm (single unit)

KWL 75



- Min. – 500 x 500mm
- Max. – 2000 x 2000mm (single unit)

Tel: +44 (0)1706 227018

www.konvekta.co.uk

e-mail: sales@konvekta.co.uk

We reserve the right to make specification changes without prior notice or obligation

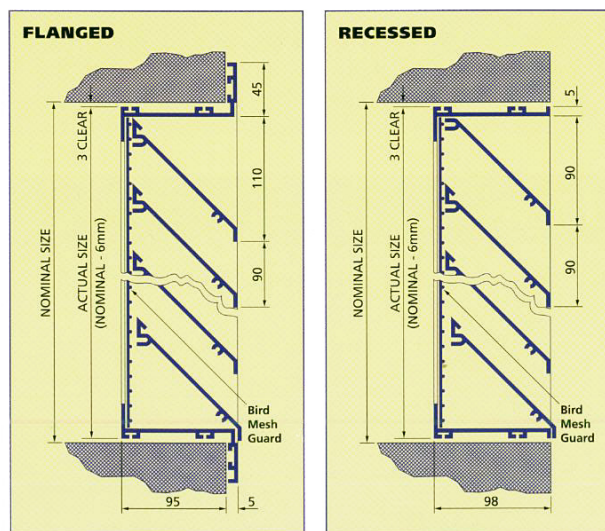
Revision: 01/2010

EXTERNAL WEATHER LOUVRES

KWL RANGE

CONSTRUCTION DATA

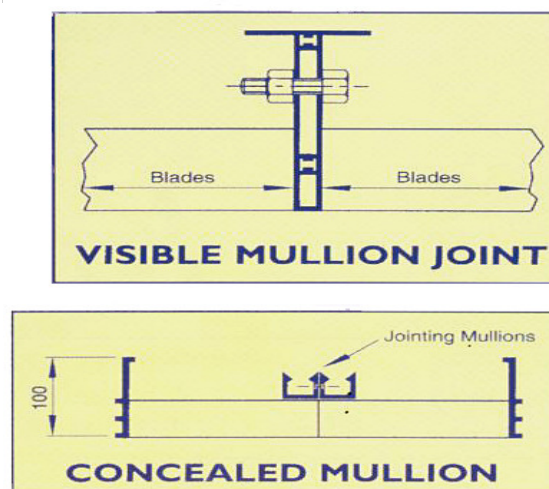
KWL 100



- Min. – 500 x 500mm
- Max. – 3000(w) x 2000(h) mm (single unit)

Multiple Louvre Assemblies:

- Louvre types KWL 50-100, 75 and 100 are suitable for banking together into multiple assemblies
- There is no limit to the size of these assemblies



Quality – Investment – Innovation

We reserve the right to make specification changes without prior notice or obligation

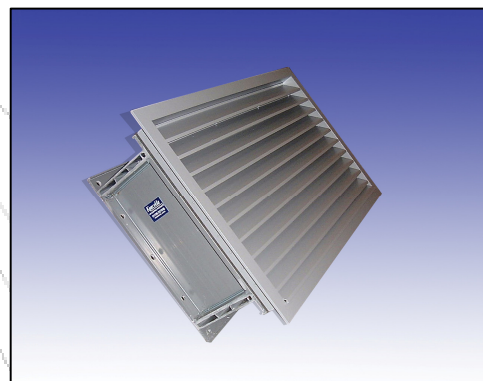
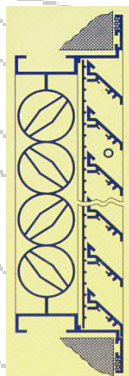
Revision: 01/2010

EXTERNAL WEATHER LOUVRES

KWL RANGE

Louvre/Damper Assemblies

- Direct coupling of low leakage damper & weather louvre to form weather/air filtration proof combination

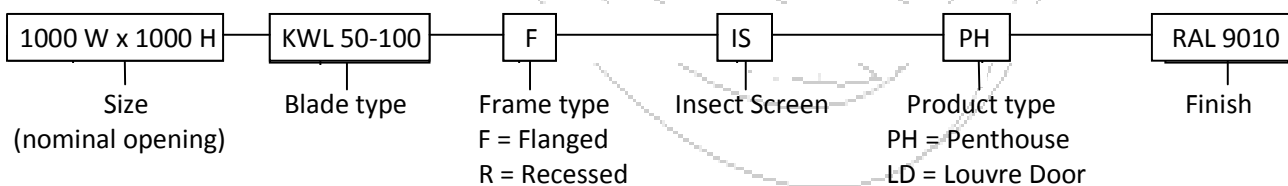


Specials:

- Stainless steel, galvanised mild steel and PVC louvres available
- Lean back louvres for pitched roofs
- Louvres suitable for severe weather conditions
- All shapes and sizes available including circular, triangular, rhombus, etc,



ORDERING



Tel: +44 (0)1706 227018

www.konvekta.co.uk

e-mail: sales@konvekta.co.uk

We reserve the right to make specification changes without prior notice or obligation

Revision: 01/2010